

# Susceptibility Report for System ID 0710018

## System Details

<b>Water System ID</b>	0710018
<b>System Name</b>	EL PASO COUNTY WCID 4 FABENS
<b>Address</b>	PO BOX 3880 FABENS, TX 798383880
<b>County</b>	EL PASO
<b>Telephone</b>	9157642212
<b>PWS Type</b>	C
<b>Total Production</b>	0

## Ground Water Sources

Source ID	Drill Date	Top Screened Interval (Ft.)	Bottom Screened Interval (Ft.)	Pumpage Rate (GPM)	Entry Point	Operational Status
G0710018C		208	433	600	002	Operational
G0710018D		340	490	450	003	Operational
G0710018F		250	370	450	005	Operational

## Surface Water Sources

Source ID	Type	Surface Water Body	Entry Point	Operational Status
-----------	------	--------------------	-------------	--------------------

No surface water sources

## PWS System Susceptibility Summary: Contaminants with HIGH Susceptibility

The system is rated as having HIGH susceptibility to the contaminants listed below.

### D.W. CONTAM. CANDIDATE LIST

Contaminant Name	Structural Integrity	Aquifer/Watershed Properties	Nonpoint Source	Point Source	Area Primary Influence	Contaminant Occurrence	Summary
BORON	----	Moderate	Low	----	----	High	High
DCPA MONO-ACID DEGRADATE	----	Moderate	High	----	----	----	High
DDE	----	Moderate	High	----	----	----	High
DIAZINON	----	Moderate	High	----	----	----	High

### INORGANICS

Contaminant Name	Structural Integrity	Aquifer/Watershed Properties	Nonpoint Source	Point Source	Area Primary Influence	Contaminant Occurrence	Summary
NICKEL	----	Moderate	High	----	----	----	High
SELENIUM	----	Moderate	High	----	----	----	High
SULFATE	Low	Moderate	High	----	----	High	High
TDS	----	Moderate	High	----	----	High	High
ZINC	Low	Moderate	High	----	----	High	High
ANTIMONY	----	Moderate	High	----	----	----	High
ARSENIC	Low	Moderate	High	----	----	----	High
BARIUM	Low	Moderate	High	----	----	----	High
BERYLLIUM	----	Moderate	High	----	----	----	High
CADMIUM	----	Moderate	High	----	----	----	High
CHLORIDE	Low	Moderate	High	----	----	High	High
CHROMIUM	----	Moderate	High	----	----	----	High
COPPER	Low	Moderate	High	----	----	----	High
CYANIDE	----	Moderate	High	----	----	----	High
IRON	Low	Moderate	High	----	----	High	High

LEAD	----	Moderate	High	----	----	----	High
MANGANESE	Low	Moderate	Low	----	----	High	High
MERCURY	----	Moderate	High	----	----	----	High

**INORGANICS UNREGULATED**

Contaminant Name	Structural Integrity	Aquifer/Watershed Properties	Nonpoint Source	Point Source	Area Primary Influence	Contaminant Occurrence	Summary
SODIUM	Low	Moderate	High	----	----	----	High

**PHYSICAL PARAMETER**

Contaminant Name	Structural Integrity	Aquifer/Watershed Properties	Nonpoint Source	Point Source	Area Primary Influence	Contaminant Occurrence	Summary
pH	----	Moderate	High	----	----	----	High

**SOC MONITORED**

Contaminant Name	Structural Integrity	Aquifer/Watershed Properties	Nonpoint Source	Point Source	Area Primary Influence	Contaminant Occurrence	Summary
2,4,5-T	----	Moderate	High	----	----	----	High
ALDRIN	----	Moderate	High	----	----	----	High
CARBARYL	----	Moderate	High	----	----	----	High
DIELDRIN	----	Moderate	High	----	----	----	High

**SOC REGULATED**

Contaminant Name	Structural Integrity	Aquifer/Watershed Properties	Nonpoint Source	Point Source	Area Primary Influence	Contaminant Occurrence	Summary
PENTACHLOROPHENOL	----	Moderate	High	----	----	----	High
SIMAZINE	----	Moderate	High	----	----	----	High
2,4,5-TP	----	Moderate	High	----	----	----	High
2,4-D	----	Moderate	High	----	----	----	High
ALACHLOR	----	Moderate	High	----	----	----	High
ATRAZINE	----	Moderate	High	----	----	----	High
BENZO(A)PYRENE	----	Moderate	High	----	----	----	High
CHLORDANE	----	Moderate	High	----	----	----	High
ENDRIN	----	Moderate	High	----	----	----	High
GLYPHOSATE	----	Moderate	High	----	----	----	High

**VOC - OTHER COMPOUNDS**

Contaminant Name	Structural Integrity	Aquifer/Watershed Properties	Nonpoint Source	Point Source	Area Primary Influence	Contaminant Occurrence	Summary
METHYL-T-BUTYL ETHER	----	Moderate	High	----	----	----	High

**VOC MONITORED**

Contaminant Name	Structural Integrity	Aquifer/Watershed Properties	Nonpoint Source	Point Source	Area Primary Influence	Contaminant Occurrence	Summary
1,3-DICHLOROBENZENE	----	Moderate	High	----	----	----	High

**VOC REGULATED**

Contaminant Name	Structural Integrity	Aquifer/Watershed Properties	Nonpoint Source	Point Source	Area Primary Influence	Contaminant Occurrence	Summary
1,1,2-TRICHLOROETHANE	----	Moderate	High	----	----	----	High
TETRACHLOROETHYLENE	----	Moderate	High	----	----	----	High
TOLUENE	----	Moderate	High	----	----	----	High

TRANS-1,2-DICHLOROETHYLENE	----	Moderate	High	----	----	----	High
TRICHLOROETHYLENE	----	Moderate	High	----	----	----	High
VINYL CHLORIDE	----	Moderate	High	----	----	----	High
XYLENES (TOTAL)	----	Moderate	High	----	----	----	High
BENZENE	----	Moderate	High	----	----	----	High
CIS-1,2-DICHLOROETHYLENE	----	Moderate	High	----	----	----	High
DICHLOROMETHANE	----	Moderate	High	----	----	----	High
ETHYLBENZENE	----	Moderate	High	----	----	----	High

## PWS System Susceptibility Summary: Contaminants with MODERATE Susceptibility

The system is rated as having MODERATE susceptibility to the contaminants listed below.

### D.W. CONTAM. CANDIDATE LIST

Contaminant Name	Structural Integrity	Aquifer/Watershed Properties	Nonpoint Source	Point Source	Area Primary Influence	Contaminant Occurrence	Summary
1,2-DIPHENYLHYDRAZINE	----	Moderate	Low	----	----	----	Moderate
1,3-DICHLOROPROPENE	----	Moderate	Low	----	----	----	Moderate
NITROBENZENE	----	Moderate	Low	----	----	----	Moderate
ORGANOTINS	----	Moderate	Low	----	----	----	Moderate
PERCHLORATE	----	Moderate	Low	----	----	----	Moderate
PROPAZINE	----	Moderate	Low	----	----	----	Moderate
RDX	----	Moderate	Low	----	----	----	Moderate
TERBACIL	----	Moderate	Low	----	----	----	Moderate
TERBUFOS	----	Moderate	Low	----	----	----	Moderate
2,4,6-TRICHLOROPHENOL	----	Moderate	Low	----	----	----	Moderate
2,4-DICHLOROPHENOL	----	Moderate	Low	----	----	----	Moderate
2,4-DINITROPHENOL	----	Moderate	Low	----	----	----	Moderate
2,4-DINITROTOLUENE	----	Moderate	Low	----	----	----	Moderate
2,6-DINITROTOLUENE	----	Moderate	Low	----	----	----	Moderate
2-METHYLPHENOL	----	Moderate	Low	----	----	----	Moderate
ACETOCHLOR	----	Moderate	Low	----	----	----	Moderate
CYANAZINE	----	Moderate	Low	----	----	----	Moderate
DCPA DI-ACID	----	Moderate	Low	----	----	----	Moderate
DEGRADATE	----	Moderate	Low	----	----	----	Moderate
DISULFOTON	----	Moderate	Low	----	----	----	Moderate
DIURON	----	Moderate	Low	----	----	----	Moderate
EPTC	----	Moderate	Low	----	----	----	Moderate
FONOFOS	----	Moderate	Low	----	----	----	Moderate
LINURON	----	Moderate	Low	----	----	----	Moderate
MOLINATE	----	Moderate	Low	----	----	----	Moderate

### INORGANICS

Contaminant Name	Structural Integrity	Aquifer/Watershed Properties	Nonpoint Source	Point Source	Area Primary Influence	Contaminant Occurrence	Summary
NITRATE	Low	Moderate	Moderate	----	----	----	Moderate
NITRATE+NITRITE	Low	Moderate	Moderate	----	----	----	Moderate
NITRITE	Low	Moderate	Moderate	----	----	----	Moderate
SILVER	----	Moderate	Low	----	----	----	Moderate
THALLIUM	----	Moderate	Low	----	----	----	Moderate
ALUMINUM	Low	Moderate	Moderate	----	----	----	Moderate
ASBESTOS	----	Moderate	----	----	----	----	Moderate
BROMIDE	----	Moderate	Low	----	----	----	Moderate
FLUORIDE	----	Moderate	----	----	----	----	Moderate
HYDROGEN SULFIDE	----	Moderate	Low	----	----	----	Moderate

### INORGANICS MONITORED

Contaminant Name	Structural Integrity	Aquifer/Watershed Properties	Nonpoint Source	Point Source	Area Primary Influence	Contaminant Occurrence	Summary
SPECIFIC CONDUCTANCE	----	Moderate	----	----	----	----	Moderate
ALKALINITY	----	Moderate	----	----	----	----	Moderate
BICARBONATE	----	Moderate	----	----	----	----	Moderate
CARBONATE	----	Moderate	----	----	----	----	Moderate
MAGNESIUM	----	Moderate	Low	----	----	----	Moderate

**INORGANICS UNREGULATED**

Contaminant Name	Structural Integrity	Aquifer/Watershed Properties	Nonpoint Source	Point Source	Area Primary Influence	Contaminant Occurrence	Summary
CALCIUM	----	Moderate	Low	----	----	----	Moderate

**PHYSICAL**

Contaminant Name	Structural Integrity	Aquifer/Watershed Properties	Nonpoint Source	Point Source	Area Primary Influence	Contaminant Occurrence	Summary
HARDNESS	----	Moderate	----	----	----	----	Moderate

**RADIOCHEM**

Contaminant Name	Structural Integrity	Aquifer/Watershed Properties	Nonpoint Source	Point Source	Area Primary Influence	Contaminant Occurrence	Summary
RADIUM-226	----	Moderate	Low	----	----	----	Moderate
RADIUM-228	----	Moderate	Low	----	----	----	Moderate
STRONTIUM-90	----	Moderate	Low	----	----	----	Moderate
TRITIUM	----	Moderate	Low	----	----	----	Moderate
GROSS ALPHA	----	Moderate	Low	----	----	----	Moderate
GROSS BETA	----	Moderate	Low	----	----	----	Moderate

**RADIOCHEM UNREGULATED**

Contaminant Name	Structural Integrity	Aquifer/Watershed Properties	Nonpoint Source	Point Source	Area Primary Influence	Contaminant Occurrence	Summary
RADON	----	Moderate	Low	----	----	----	Moderate
STRONTIUM-89	----	Moderate	Low	----	----	----	Moderate
URANIUM	----	Moderate	Low	----	----	----	Moderate

**SOC MONITORED**

Contaminant Name	Structural Integrity	Aquifer/Watershed Properties	Nonpoint Source	Point Source	Area Primary Influence	Contaminant Occurrence	Summary
PHENANTHRENE	----	Moderate	Low	----	----	----	Moderate
PROMETON	----	Moderate	Low	----	----	----	Moderate
PROPACHLOR	----	Moderate	Low	----	----	----	Moderate
PYRENE	----	Moderate	Low	----	----	----	Moderate
3-HYDROXYCARBOFURAN	----	Moderate	Low	----	----	----	Moderate
ACENAPHTHENE	----	Moderate	Low	----	----	----	Moderate
ACENAPHTHYLENE	----	Moderate	Low	----	----	----	Moderate
TRIFLURALIN	----	Moderate	Low	----	----	----	Moderate
ANTHRACENE	----	Moderate	Low	----	----	----	Moderate
BENTAZON	----	Moderate	Low	----	----	----	Moderate
BENZO[A]ANTHRACENE	----	Moderate	----	----	----	----	Moderate
BENZO[B]FLUORANTHENE	----	Moderate	Low	----	----	----	Moderate
BENZO[G,H,I]PERYLENE	----	Moderate	Low	----	----	----	Moderate
BENZO[K]FLUORANTHENE	----	Moderate	----	----	----	----	Moderate
BROMACIL	----	Moderate	Low	----	----	----	Moderate
BUTACHLOR	----	Moderate	Low	----	----	----	Moderate
BUTYL BENZYL PHTHALATE	----	Moderate	Low	----	----	----	Moderate

CHRYSENE	----	Moderate	Low	----	----	----	Moderate
DIBENZ[A,H]ANTHRACENE	----	Moderate	----	----	----	----	Moderate
DICAMBA	----	Moderate	Low	----	----	----	Moderate
DIETHYL PHTHALATE	----	Moderate	Low	----	----	----	Moderate
DIMETHYL PHTHALATE	----	Moderate	Low	----	----	----	Moderate
DI-N-BUTYL PHTHALATE	----	Moderate	Low	----	----	----	Moderate
FLUORENE	----	Moderate	Low	----	----	----	Moderate
INDENO[1,2,3,CD]PYRENE	----	Moderate	----	----	----	----	Moderate
LAMBAST	----	Moderate	Low	----	----	----	Moderate
METHIOCARB	----	Moderate	Low	----	----	----	Moderate
METHOMYL	----	Moderate	Moderate	----	----	----	Moderate
METOLACHLOR	----	Moderate	Low	----	----	----	Moderate
METRIBUZIN	----	Moderate	Moderate	----	----	----	Moderate

**SOC REGULATED**

Contaminant Name	Structural Integrity	Aquifer/Watershed Properties	Nonpoint Source	Point Source	Area Primary Influence	Contaminant Occurrence	Summary
OXAMYL	----	Moderate	Moderate	----	----	----	Moderate
PCBs	----	Moderate	Low	----	----	----	Moderate
PICLORAM	----	Moderate	Moderate	----	----	----	Moderate
2,3,7,8-TCDD	----	Moderate	----	----	----	----	Moderate
TOXAPHENE	----	Moderate	Low	----	----	----	Moderate
ALDICARB	----	Moderate	Low	----	----	----	Moderate
ALDICARB SULFONE	----	Moderate	Low	----	----	----	Moderate
ALDICARB SULFOXIDE	----	Moderate	Low	----	----	----	Moderate
CARBOFURAN	----	Moderate	Low	----	----	----	Moderate
CHLORDANE (ALPHA-CHLORDANE)	----	Moderate	Low	----	----	----	Moderate
CHLORDANE (GAMMA-CHLORDANE)	----	Moderate	Low	----	----	----	Moderate
CHLORDANE (TRANS-NONACHLOR)	----	Moderate	Low	----	----	----	Moderate
DALAPON	----	Moderate	Low	----	----	----	Moderate
DI-(2-ETHYLHEXYL)ADIPATE	----	Moderate	Low	----	----	----	Moderate
DI-(2-ETHYLHEXYL)PHTHALATE	----	Moderate	Low	----	----	----	Moderate
DIBROMOCHLOROPROPANE	----	Moderate	Low	----	----	----	Moderate
DINOSEB	----	Moderate	Low	----	----	----	Moderate
DIQUAT	----	Moderate	Low	----	----	----	Moderate
ENDOTHALL	----	Moderate	Low	----	----	----	Moderate
ETHYLENE DIBROMIDE	----	Moderate	----	----	----	----	Moderate
HEPTACHLOR	----	Moderate	Low	----	----	----	Moderate
HEPTACHLOR EPOXIDE	----	Moderate	Low	----	----	----	Moderate
HEXACHLOROBENZENE	----	Moderate	Low	----	----	----	Moderate
HEXACHLOROCYCLOPENTADIENE	----	Moderate	Low	----	----	----	Moderate
LINDANE	----	Moderate	Low	----	----	----	Moderate
METHOXYCHLOR	----	Moderate	Low	----	----	----	Moderate

**THM**

Contaminant Name	Structural Integrity	Aquifer/Watershed Properties	Nonpoint Source	Point Source	Area Primary Influence	Contaminant Occurrence	Summary
BROMOCHLOROMETHANE	----	Moderate	----	----	----	----	Moderate
BROMODICHLOROMETHANE	----	Moderate	----	----	----	----	Moderate
BROMOFORM	----	Moderate	Low	----	----	----	Moderate
BROMOMETHANE	----	Moderate	Low	----	----	----	Moderate
CHLOROFORM	----	Moderate	Low	----	----	----	Moderate
DIBROMOCHLOROMETHANE	----	Moderate	----	----	----	----	Moderate

**VOC - OTHER COMPOUNDS**

Contaminant Name	Structural Integrity	Aquifer/Watershed Properties	Nonpoint Source	Point Source	Area Primary Influence	Contaminant Occurrence	Summary
------------------	----------------------	------------------------------	-----------------	--------------	------------------------	------------------------	---------

2-HEXANONE	---	Moderate	Low	---	---	---	Moderate
4-METHYL-2-PENTANONE (MIBK)	----	Moderate	Low	----	----	----	Moderate
TETRAHYDROFURAN	----	Moderate	Low	----	----	----	Moderate
VINYL ACETATE	----	Moderate	Low	----	----	----	Moderate
ACETONE	----	Moderate	Low	----	----	----	Moderate
ACRYLONITRILE	----	Moderate	Low	----	----	----	Moderate
CARBON DISULFIDE	----	Moderate	Low	----	----	----	Moderate
ETHYL METHACRYLATE	----	Moderate	Low	----	----	----	Moderate
METHYL IODIDE (Iodomethane)	----	Moderate	Low	----	----	----	Moderate
METHYL ETHYL KETONE	----	Moderate	Low	----	----	----	Moderate
METHYL METHACRYLATE	----	Moderate	Low	----	----	----	Moderate

## VOC MONITORED

Contaminant Name	Structural Integrity	Aquifer/Watershed Properties	Nonpoint Source	Point Source	Area Primary Influence	Contaminant Occurrence	Summary
1,1,1,2-TETRACHLOROETHANE	----	Moderate	Low	----	----	----	Moderate
1,1,2,2-TETRACHLOROETHANE	----	Moderate	Low	----	----	----	Moderate
1,1-DICHLOROETHANE	----	Moderate	Low	----	----	----	Moderate
1,1-DICHLOROPROPENE	----	Moderate	Low	----	----	----	Moderate
1,2,3-TRICHLOROBENZENE	----	Moderate	Low	----	----	----	Moderate
1,2,3-TRICHLOROPROPANE	----	Moderate	Low	----	----	----	Moderate
1,2,4-TRIMETHYLBENZENE	----	Moderate	Low	----	----	----	Moderate
1,3,5-TRIMETHYLBENZENE	----	Moderate	Low	----	----	----	Moderate
1,3-DICHLOROPROPANE	----	Moderate	Low	----	----	----	Moderate
2,2-DICHLOROPROPANE	----	Moderate	----	----	----	----	Moderate
N-BUTYLBENZENE	----	Moderate	----	----	----	----	Moderate
N-PROPYLBENZENE	----	Moderate	----	----	----	----	Moderate
S-BUTYLBENZENE	----	Moderate	Low	----	----	----	Moderate
T-BUTYLBENZENE	----	Moderate	----	----	----	----	Moderate
2-CHLOROTOLUENE	----	Moderate	Low	----	----	----	Moderate
4-CHLOROTOLUENE	----	Moderate	Low	----	----	----	Moderate
4-ISOPROPYLTOLUENE	----	Moderate	Low	----	----	----	Moderate
TRANS-1,3-DICHLOROPROPENE	----	Moderate	Low	----	----	----	Moderate
TRICHLOROFLUOROMETHANE	----	Moderate	Low	----	----	----	Moderate
BROMOBENZENE	----	Moderate	----	----	----	----	Moderate
CHLOROETHANE	----	Moderate	Low	----	----	----	Moderate
CHLOROMETHANE	----	Moderate	Low	----	----	----	Moderate
CIS-1,3-DICHLOROPROPENE	----	Moderate	Low	----	----	----	Moderate
DIBROMOMETHANE	----	Moderate	Low	----	----	----	Moderate
DICHLORODIFLUOROMETHANE	----	Moderate	Low	----	----	----	Moderate
HEXACHLOROBUTADIENE	----	Moderate	Low	----	----	----	Moderate
ISOPROPYLBENZENE	----	Moderate	Low	----	----	----	Moderate
M + P XYLENE	----	Moderate	Low	----	----	----	Moderate
NAPHTHALENE	----	Moderate	Low	----	----	----	Moderate

## VOC REGULATED

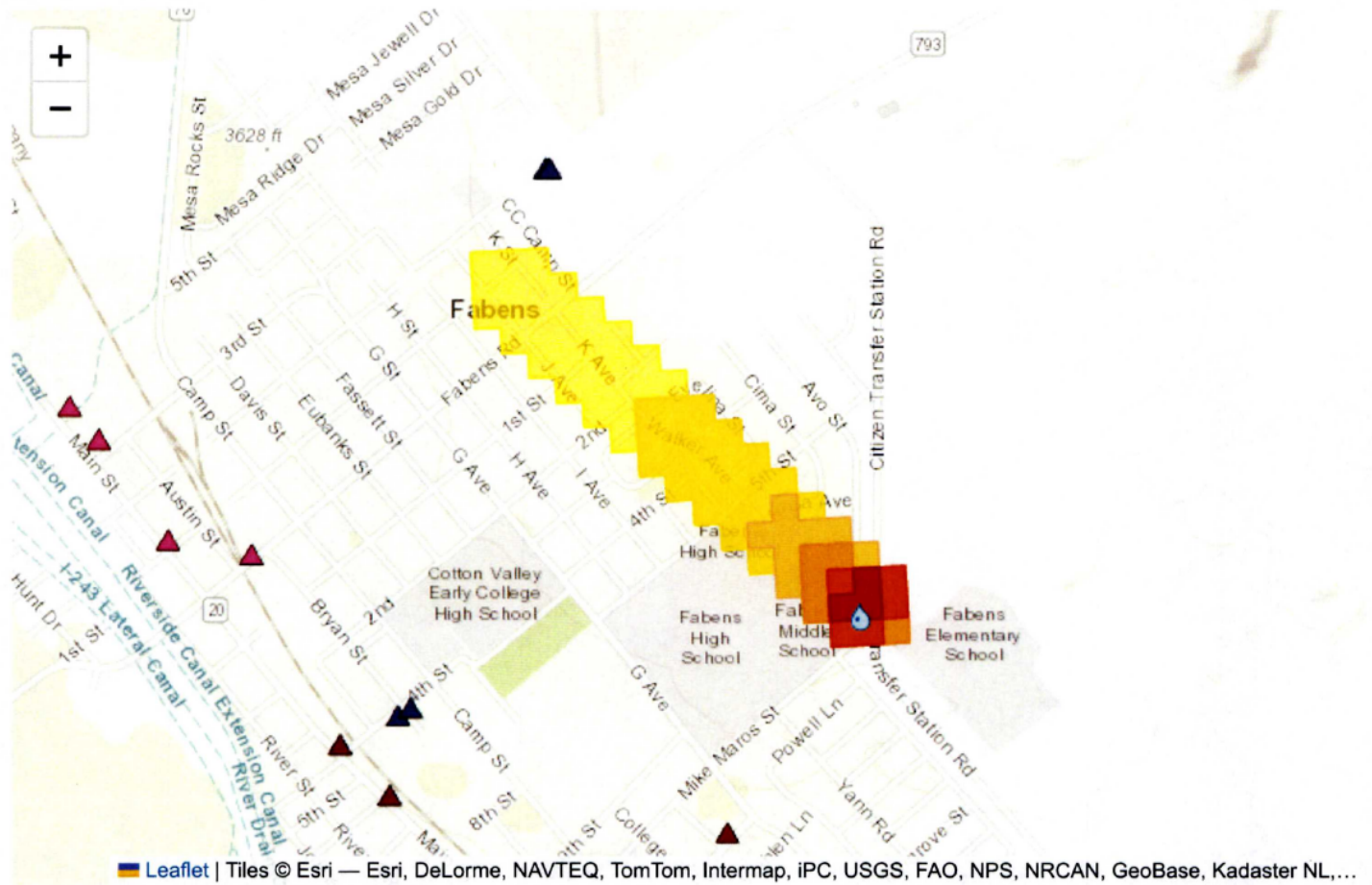
Contaminant Name	Structural Integrity	Aquifer/Watershed Properties	Nonpoint Source	Point Source	Area Primary Influence	Contaminant Occurrence	Summary
1,1,1-TRICHLOROETHANE	----	Moderate	Low	----	----	----	Moderate
1,1-DICHLOROETHYLENE	----	Moderate	Low	----	----	----	Moderate
1,2,4-TRICHLOROBENZENE	----	Moderate	Low	----	----	----	Moderate
1,2-DICHLOROETHANE	----	Moderate	Low	----	----	----	Moderate
1,2-DICHLOROPROPANE	----	Moderate	Low	----	----	----	Moderate
ORTHO-1,2-DICHLOROBENZENE	----	Moderate	Low	----	----	----	Moderate
O-XYLENE	----	Moderate	Low	----	----	----	Moderate
PARA-1,4-DICHLOROBENZENE	----	Moderate	Low	----	----	----	Moderate
P-XYLENE	----	Moderate	Low	----	----	----	Moderate

STYRENE	----	Moderate	Low	----	----	----	Moderate
CARBON TETRACHLORIDE	----	Moderate	Low	----	----	----	Moderate
CHLOROBENZENE (MONOCHLOROBENZENE)	----	Moderate	Low	----	----	----	Moderate
MONOCHLOROBENZENE (CHLOROBENZENE)	----	Moderate	Low	----	----	----	Moderate
M-XYLENE	----	Moderate	Low	----	----	----	Moderate

**Other**

Contaminant Name	Structural Integrity	Aquifer/Watershed Properties	Nonpoint Source	Point Source	Area Primary Influence	Contaminant Occurrence	Summary
P-ALKALINITY	----	Moderate	----	----	----	----	Moderate
TOTAL ALPHA EMITTING RADIUM	----	Moderate	Low	----	----	----	Moderate
TOTAL COLIFORM	Low	Moderate	Moderate	----	----	----	Moderate
TOTAL TRIHALOMETHANE TRIAZINES	----	Moderate	----	----	----	----	Moderate
AROCLOR (PCB)	----	Moderate	Low	----	----	----	Moderate
CRYPTOSPORIDIUM PARVUM	Low	Moderate	Moderate	----	----	----	Moderate
ESCHERICHIA COLI	Low	Moderate	Moderate	----	----	----	Moderate
FECAL VIRUSES	Low	Moderate	Moderate	----	----	----	Moderate
GIARDIA LAMBLIA	Low	Moderate	Moderate	----	----	----	Moderate

### Source Details: G0710018C



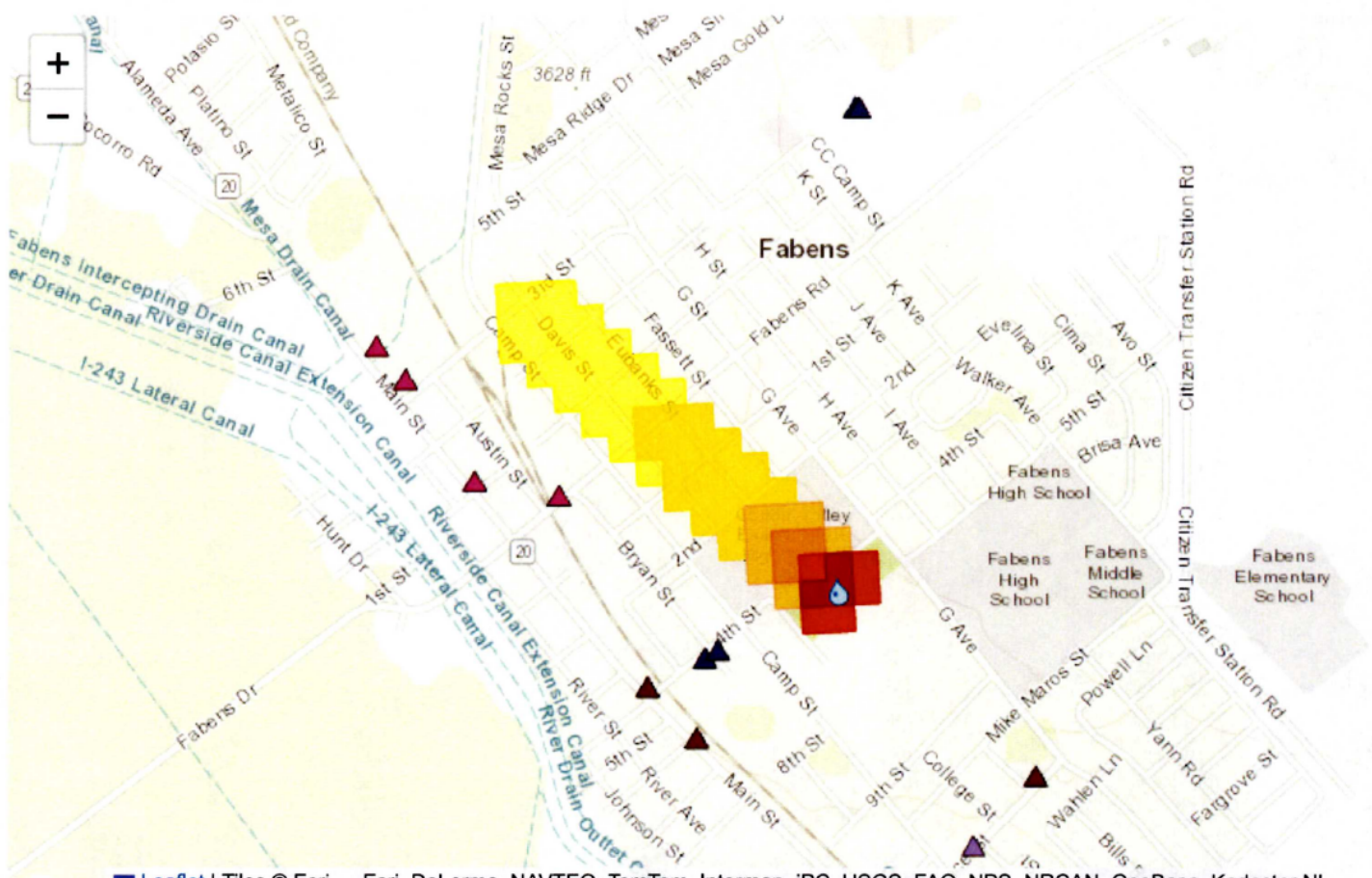
#### Contaminants with HIGH Susceptibility

No contaminants with high susceptibility.

#### Contaminants with MODERATE Susceptibility

No contaminants with moderate susceptibility.

### Source Details: G0710018D



Leaflet | Tiles © Esri — Esri, DeLorme, NAVTEQ, TomTom, Intermap, iPC, USGS, FAO, NPS, NRCAN, GeoBase, Kadaster NL,...

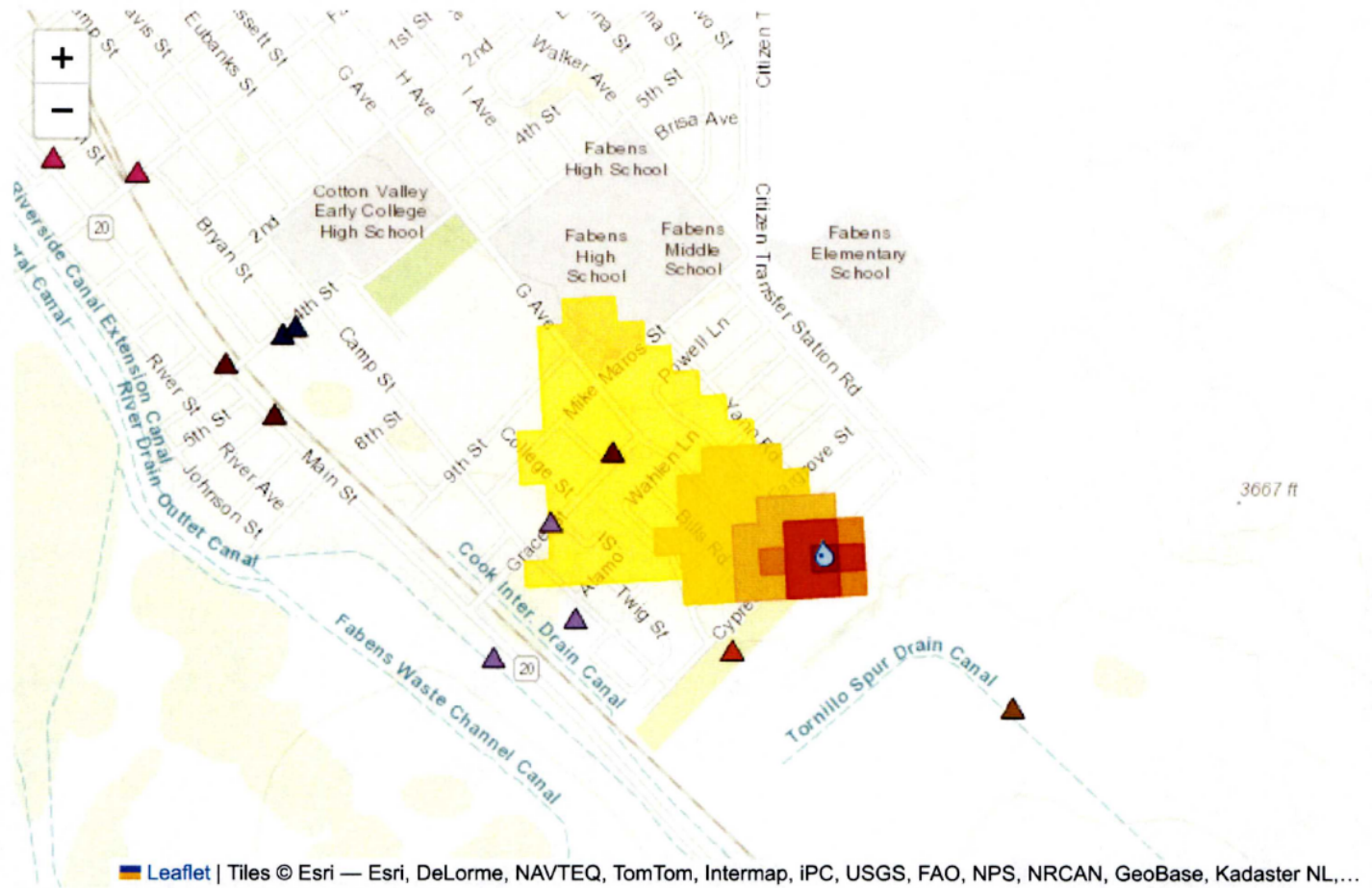
#### Contaminants with HIGH Susceptibility

No contaminants with high susceptibility.

#### Contaminants with MODERATE Susceptibility

No contaminants with moderate susceptibility.

### Source Details: G0710018F



#### Contaminants with HIGH Susceptibility

No contaminants with high susceptibility.

#### Contaminants with MODERATE Susceptibility

No contaminants with moderate susceptibility.

## Contaminant List

List of regulated and unregulated assessed contaminants grouped by contaminant class. TCEQ Chapter 290 Subchapter F rules are cited for each drinking water standard (secondary drinking water standards are italicized). The TCEQ threshold limit is the concentration used within the contaminant occurrence component to determine if a detection of the chemical was found during water quality monitoring activities. The chemical abstract service (CAS) number is a unique identifier for each chemical.

### D.W. CONTAM. CANDIDATE LIST

Contaminant Name	Drinking Water Standard	PWS Rule	TCEQ Threshold	CAS Number
CYANAZINE			0.01 ug/L	21725-46-2
DCPA DI-ACID DEGRADATE			0.00 ug/L	2136-79-0
BORON	2.20 mg/L		10.00 ug/L	11113-50-1
2,4,6-TRICHLOROPHENOL	0.08 mg/L		20.00 ug/L	88-06-2
2,4-DICHLOROPHENOL	0.07 mg/L		20.00 ug/L	120-83-2
2,4-DINITROPHENOL	0.05 mg/L		20.00 ug/L	51-28-5
2,4-DINITROTOLUENE	0.00 mg/L		5.00 ug/L	121-14-2
2,6-DINITROTOLUENE	0.00 mg/L		5.00 ug/L	606-20-2
2-METHYLPHENOL	0.05 mg/L		5.00 ug/L	95-48-7
ACETOCHLOR			0.01 ug/L	34256-82-1
1,2-DIPHENYLHYDRAZINE	0.00 mg/L		0.10 ug/L	122-66-7
1,3-DICHLOROPROPENE	0.01 mg/L		0.10 ug/L	542-75-6
PROPAZINE			0.01 ug/L	139-40-2
RDX	0.01 mg/L		0.10 ug/L	121-82-4
TERBACIL			0.01 ug/L	5902-51-2
TERBUFOS			0.01 ug/L	13071-79-9
DCPA MONO-ACID DEGRADATE			0.00 ug/L	887-54-7
DDE	0.00 mg/L		0.01 ug/L	72-55-9
DIAZINON	0.02 mg/L		0.01 ug/L	333-41-5
DISULFOTON	0.00 mg/L		0.01 ug/L	298-04-4
DIURON	0.05 mg/L		0.05 ug/L	330-54-1
EPTC	0.61 mg/L		0.01 ug/L	759-94-4
FONOFOS			0.01 ug/L	944-22-9
LINURON			0.01 ug/L	330-55-2
MOLINATE	0.05 mg/L		0.01 ug/L	2212-67-1
NITROBENZENE	0.01 mg/L		0.10 ug/L	98-95-3
ORGANOTINS				
PERCHLORATE				14797-73-0

### INORGANICS

Contaminant Name	Drinking Water Standard	PWS Rule	TCEQ Threshold	CAS Number
CHLORIDE		\$290.113	125.00 mg/L	16887-00-6
CHROMIUM	0.10 mg/L	\$290.103(1)	50.00 ug/L	11104-59-9
COPPER	1.30 mg/L	\$290.120	65.00 ug/L	17493-86-6
CYANIDE	0.20 mg/L	\$290.103(1)	0.01 mg/L	57-12-5
BERYLLIUM	0.00 mg/L	\$290.103(1)	2.00 ug/L	14701-08-7
BROMIDE				
CADMIUM	0.01 mg/L	\$290.103(1)	2.50 ug/L	22537-48-0
ALUMINUM	24.44 mg/L	\$290.113	0.10 ug/L	14903-36-7
ANTIMONY	0.01 mg/L	\$290.103(1)	3.00 ug/L	64924-52-3
ARSENIC	0.05 mg/L	\$290.103(1)	10.00 ug/L	15584-04-0
ASBESTOS	7.00 mg/L		-9,999.00 ug/L	1332-21-4
BARIUM	2.00 mg/L	\$290.103(1)	1,000.00 ug/L	16541-35-8
SELENIUM	0.05 mg/L	\$290.103(1)	25.00 ug/L	7782-49-2
SILVER	0.12 mg/L	\$290.113	25.00 ug/L	14701-21-4
SULFATE	500.00 mg/L	\$290.113	125.00 mg/L	14808-79-8
TDS		\$290.113	250.00 mg/L	
THALLIUM	0.00 mg/L	\$290.103(1)	1.00 ug/L	7440-28-0
ZINC	7.33 mg/L	\$290.113	2.50 ug/L	15176-26-8
FLUORIDE	4.00 mg/L	\$290.103(1)	2.00 mg/L	16984-48-8
HYDROGEN SULFIDE		\$290.113	0.00 mg/L	15035-72-0

IRON		§290.113	150.00 ug/L	15438-31-0
LEAD	0.02 mg/L	§290.120	0.00 ug/L	14701-27-0
MANGANESE	1.15 mg/L	§290.113	25.00 ug/L	14333-14-3
MERCURY	0.00 mg/L	§290.103(1)	1.00 ug/L	14302-87-5
NICKEL	0.49 mg/L	§290.103(1)	50.00 ug/L	14701-22-5
NITRATE	10.00 mg/L	§290.103(1)	3.00 mg/L	14797-55-8
NITRATE+NITRITE	10.00 mg/L	§290.103(1)	3.00 mg/L	none
NITRITE	1.00 mg/L	§290.103(1)	0.50 mg/L	14797-65-0

### INORGANICS MONITORED

Contaminant Name	Drinking Water Standard	PWS Rule	TCEQ Threshold	CAS Number
CARBONATE			1.00 mg/L	3812-32-6
BICARBONATE			1.00 mg/L	71-52-3
ALKALINITY			1.00 mg/L	
SPECIFIC CONDUCTANCE			1.00 uS/cm	
MAGNESIUM			0.01 mg/L	14581-92-1

### INORGANICS UNREGULATED

Contaminant Name	Drinking Water Standard	PWS Rule	TCEQ Threshold	CAS Number
CALCIUM			0.02 mg/L	14102-48-8
SODIUM			0.20 mg/L	17341-25-2

### PHYSICAL

Contaminant Name	Drinking Water Standard	PWS Rule	TCEQ Threshold	CAS Number
HARDNESS			1.00 mg/L	

### PHYSICAL PARAMETER

Contaminant Name	Drinking Water Standard	PWS Rule	TCEQ Threshold	CAS Number
pH		§290.113	0.10 pH	

### RADIOCHEM

Contaminant Name	Drinking Water Standard	PWS Rule	TCEQ Threshold	CAS Number
RADIUM-226	5.00 mg/L	§290.110	1.00 pCi/L	13982-63-3
RADIUM-228	5.00 mg/L	§290.110	0.50 pCi/L	15262-20-1
STRONTIUM-90		§290.110	0.50 pCi/L	10098-97-2
TRITIUM		§290.110	1.00 pCi/L	15086-10-9
GROSS ALPHA	15.00 mg/L	§290.110	3.00 pCi/L	
GROSS BETA	4.00 mg/L	§290.110	3.00 pCi/L	

### RADIOCHEM UNREGULATED

Contaminant Name	Drinking Water Standard	PWS Rule	TCEQ Threshold	CAS Number
RADON	300.00 mg/L		0.50 pCi/L	10043-92-2
STRONTIUM-89			0.50 pCi/L	14701-18-9
URANIUM	0.02 mg/L		1.00 ug/L	none

### SOC MONITORED

Contaminant Name	Drinking Water Standard	PWS Rule	TCEQ Threshold	CAS Number
CHRYSENE	0.13 mg/L		0.10 ug/L	218-01-9
BENZO[B]FLUORANTHENE	0.00 mg/L		10.00 ug/L	205-99-2
BENZO[G,H,I]PERYLENE	0.73 mg/L		10.00 ug/L	191-24-2
BENZO[K]FLUORANTHENE	0.01 ug/L		10.00 ug/L	207-08-9
BROMACIL			0.05 ug/L	314-40-9
BUTACHLOR			0.05 ug/L	23184-66-9
BUTYL BENZYL PHTHALATE	4.89 mg/L		5.00 ug/L	85-68-7

CARBARYL	2.44 mg/L	0.01 ug/L	63-25-2
2,4,5-T	0.24 mg/L	0.05 ug/L	93-76-5
3-HYDROXYCARBOFURAN		0.05 ug/L	16655-82-6
ACENAPHTHENE	1.47 mg/L	5.00 ug/L	83-32-9
ACENAPHTHYLENE	1.47 mg/L	5.00 ug/L	208-96-8
ALDRIN	0.00 mg/L	0.10 ug/L	309-00-2
ANTHRACENE	7.33 mg/L	5.00 ug/L	120-12-7
BENTAZON		0.05 ug/L	25057-89-0
BENZO(A)ANTHRACENE	0.00 mg/L	10.00 ug/L	56-55-3
PHENANTHRENE		5.00 ug/L	85-01-8
PROMETON		0.01 ug/L	1610-18-0
PROPACHLOR		0.01 ug/L	1918-16-7
PYRENE	0.73 mg/L	0.10 ug/L	129-00-0
TRIFLURALIN	0.12 mg/L	0.01 ug/L	1582-09-8
DIBENZ(A,H)ANTHRACENE	0.00 mg/L	10.00 ug/L	53-70-3
DICAMBA	0.73 mg/L	0.05 ug/L	1918-00-9
DIELDRIN	0.00 mg/L	0.01 ug/L	60-57-1
DIETHYL PHTHALATE	19.55 mg/L	5.00 ug/L	84-66-2
DIMETHYL PHTHALATE	19.55 mg/L	5.00 ug/L	131-11-3
DI-N-BUTYL PHTHALATE	2.44 mg/L	5.00 ug/L	84-74-2
FLUORENE	0.98 mg/L	0.10 ug/L	86-73-7
INDENO[1,2,3,CD]PYRENE		10.00 ug/L	193-39-5
LAMBAST		0.05 ug/L	845-52-3
METHIOCARB		0.05 ug/L	2032-65-7
METHOMYL	0.61 mg/L	0.05 ug/L	16752-77-5
METOLACHLOR	3.67 mg/L	0.01 ug/L	51218-45-2
METRIBUZIN		0.01 ug/L	21087-64-9

## SOC REGULATED

Contaminant Name	Drinking Water Standard	PWS Rule	TCEQ Threshold	CAS Number
CHLORDANE	0.00 mg/L	\$290.103(3)(A)	0.10 ug/L	57-74-9
CHLORDANE (ALPHA-CHLORDANE)	0.00 mg/L	\$290.103(3)(A)	0.10 ug/L	5103-71-9
CHLORDANE (GAMMA-CHLORDANE)	0.00 mg/L	\$290.103(3)(A)	0.10 ug/L	12789-03-6
CHLORDANE (TRANS-NONACHLOR)	0.00 mg/L	\$290.103(3)(A)	0.10 ug/L	39765-80-5
DALAPON	0.20 mg/L	\$290.103(3)(A)	0.05 mg/L	75-99-0
CARBOFURAN	0.04 mg/L	\$290.103(3)(A)	0.01 ug/L	1563-66-2
2,3,7,8-TCDD	0.00 mg/L	\$290.103(3)(A)	0.10 mg/L	1746-01-6
2,4,5-TP	0.05 mg/L	\$290.103(3)(A)	0.05 ug/L	93-72-1
2,4-D	0.07 mg/L	\$290.103(3)(A)	0.15 ug/L	94-75-7
ALACHLOR	0.00 mg/L	\$290.103(3)(A)	0.01 ug/L	15972-60-8
ALDICARB	0.01 mg/L	\$290.103(3)(A)	0.55 ug/L	116-06-3
ALDICARB SULFONE	0.01 mg/L	\$290.103(3)(A)	0.10 ug/L	1646-88-4
ALDICARB SULFOXIDE	0.01 mg/L	\$290.103(3)(A)	0.05 ug/L	1646-87-3
ATRAZINE	0.00 mg/L	\$290.103(3)(A)	0.01 ug/L	1912-24-9
BENZO(A)PYRENE	0.00 mg/L	\$290.103(3)(A)	10.00 ug/L	50-32-8
PICLORAM	0.50 mg/L	\$290.103(3)(A)	0.05 ug/L	1918-02-1
SIMAZINE	0.00 mg/L		0.01 ug/L	122-34-9
TOXAPHENE	0.00 mg/L	\$290.103(3)(A)	2.00 ug/L	8001-35-2
DI-(2-ETHYLHEXYL)ADIPATE	0.40 mg/L	\$290.103(3)(A)	5.00 ug/L	103-23-1
DI-(2-ETHYLHEXYL)PHTHALATE	0.01 mg/L	\$290.103(3)(A)	5.00 ug/L	117-81-7
DIBROMOCHLOROPROPANE	0.00 mg/L	\$290.103(3)(A)	0.10 ug/L	67708-83-2
DINOSEB	0.01 mg/L	\$290.103(3)(A)	0.05 ug/L	88-85-7
DIQUAT	0.02 mg/L	\$290.103(3)(A)	0.05 mg/L	2764-72-9
ENDOTHALL	0.10 mg/L	\$290.103(3)(A)	0.05 ug/L	145-73-3
ENDRIN	0.00 mg/L	\$290.103(3)(A)	0.05 ug/L	72-20-8
ETHYLENE DIBROMIDE	0.00 mg/L	\$290.103(3)(A)	0.10 ug/L	106-93-4
GLYPHOSATE	0.70 mg/L	\$290.103(3)(A)	0.05 ug/L	1071-83-6
HEPTACHLOR	0.00 mg/L	\$290.103(3)(A)	0.10 ug/L	76-44-8
HEPTACHLOR EPOXIDE	0.00 mg/L	\$290.103(3)(A)	0.10 ug/L	1024-57-3
HEXACHLOROBENZENE	0.00 mg/L	\$290.103(3)(A)	5.00 ug/L	118-74-1
HEXACHLOROCYCLOPENTADIENE	0.05 mg/L	\$290.103(3)(A)	5.00 ug/L	77-47-4

LINDANE	0.00 mg/L	§290.103(3)(A)	0.01 ug/L	58-89-9
METHOXYCHLOR	0.04 mg/L	§290.103(3)(A)	0.05 ug/L	72-43-5
OXAMYL	0.20 mg/L	§290.103(3)(A)	0.05 ug/L	23135-22-0
PCBs	0.00 mg/L	§290.103(3)(A)	0.10 ug/L	53469-21-9
PENTACHLOROPHENOL	0.00 mg/L	§290.103(3)(A)	30.00 ug/L	87-86-5

## THM

Contaminant Name	Drinking Water Standard	PWS Rule	TCEQ Threshold	CAS Number
CHLOROFORM	0.10 mg/L	§290.116	0.10 ug/L	67-66-3
BROMOCHLOROMETHANE	0.98 mg/L		0.10 ug/L	74-97-5
BROMODICHLOROMETHANE	0.10 mg/L	§290.116	0.10 ug/L	75-27-4
BROMOFORM	0.10 mg/L	§290.116	0.10 ug/L	75-25-2
BROMOMETHANE	0.03 mg/L		0.10 ug/L	74-83-9
DIBROMOCHLOROMETHANE	0.10 mg/L	§290.116	0.10 ug/L	124-48-1

## VOC - OTHER COMPOUNDS

Contaminant Name	Drinking Water Standard	PWS Rule	TCEQ Threshold	CAS Number
CARBON DISULFIDE	2.44 mg/L		0.10 ug/L	75-15-0
2-HEXANONE	1.47 mg/L		0.10 ug/L	591-78-6
4-METHYL-2-PENTANONE (MIBK)	1.96 mg/L		0.10 ug/L	108-10-1
ACETONE	2.44 mg/L		0.10 ug/L	67-64-1
ACRYLONITRILE	0.00 mg/L		0.10 ug/L	107-13-1
TETRAHYDROFURAN	0.12 mg/L		0.10 ug/L	109-99-9
VINYL ACETATE	24.44 mg/L		0.10 ug/L	108-05-4
ETHYL METHACRYLATE	2.20 mg/L		0.10 ug/L	97-63-2
METHYL IODIDE (Iodomethane)	0.03 mg/L		0.10 ug/L	74-88-4
METHYL ETHYL KETONE	14.67 mg/L		0.10 ug/L	78-93-3
METHYL METHACRYLATE	34.22 mg/L		0.10 ug/L	80-62-6
METHYL-T-BUTYL ETHER	0.24 mg/L		0.10 ug/L	1634-04-4

## VOC MONITORED

Contaminant Name	Drinking Water Standard	PWS Rule	TCEQ Threshold	CAS Number
CHLOROETHANE	9.78 mg/L		0.10 ug/L	75-00-3
CHLOROMETHANE	0.07 mg/L		0.10 ug/L	74-87-3
CIS-1,3-DICHLOROPROPENE	0.00 mg/L		0.10 ug/L	10061-01-5
BROMOBENZENE	0.49 mg/L		0.10 ug/L	108-86-1
2-CHLOROTOLUENE	0.49 mg/L		0.10 ug/L	95-49-8
4-CHLOROTOLUENE	0.49 mg/L		0.10 ug/L	106-43-4
4-ISOPROPYLTOLUENE	2.44 mg/L		0.10 ug/L	99-87-6
1,1,1,2-TETRACHLOROETHANE	0.04 mg/L		0.10 ug/L	630-20-6
1,1,2,2-TETRACHLOROETHANE	0.17 mg/L		0.10 ug/L	79-34-5
1,1-DICHLOROETHANE	2.44 mg/L		0.10 ug/L	75-34-3
1,1-DICHLOROPROPENE	0.01 mg/L		0.10 ug/L	563-58-6
1,2,3-TRICHLOROBENZENE	0.07 mg/L		0.10 ug/L	87-61-6
1,2,3-TRICHLOROPROPANE	0.00 mg/L		0.10 ug/L	96-18-4
1,2,4-TRIMETHYLBENZENE	1.22 mg/L		0.10 ug/L	95-63-6
1,3,5-TRIMETHYLBENZENE	1.22 mg/L		0.10 ug/L	108-67-8
1,3-DICHLOROBENZENE	0.73 mg/L		0.10 ug/L	541-73-1
1,3-DICHLOROPROPANE	0.01 mg/L		0.10 ug/L	142-28-9
2,2-DICHLOROPROPANE			0.10 ug/L	594-20-7
S-BUTYLBENZENE	0.98 mg/L		0.10 ug/L	135-98-8
T-BUTYLBENZENE	0.98 mg/L		0.10 ug/L	98-06-6
TRANS-1,3-DICHLOROPROPENE	0.01 mg/L		0.10 ug/L	10061-02-6
TRICHLOROFLUOROMETHANE	7.33 mg/L		0.10 ug/L	75-69-4
DIBROMOMETHANE	0.12 mg/L		0.10 ug/L	74-95-3
DICHLORODIFLUOROMETHANE	4.89 mg/L		0.10 ug/L	75-71-8
HEXACHLOROBUTADIENE	0.00 ug/L		0.10 ug/L	87-68-3
ISOPROPYLBENZENE	2.44 mg/L		0.10 ug/L	98-82-8

M + P XYLENE		0.10 ug/L	106-42-3
NAPHTHALENE	0.49 mg/L	0.10 ug/L	91-20-3
N-BUTYLBENZENE	0.98 mg/L	0.10 ug/L	104-51-8
N-PROPYLBENZENE	0.98 mg/L	0.10 ug/L	103-65-1

## VOC REGULATED

Contaminant Name	Drinking Water Standard	PWS Rule	TCEQ Threshold	CAS Number
CHLOROBENZENE (MONOCHLOROBENZENE)	0.10 mg/L		0.10 ug/L	108-90-7
CIS-1,2-DICHLOROETHYLENE	0.07 mg/L	\$290.103(3)(B)	0.10 ug/L	156-59-2
CARBON TETRACHLORIDE	0.00 mg/L	\$290.103(3)(B)	0.10 ug/L	56-23-5
1,1,1-TRICHLOROETHANE	0.20 mg/L	\$290.103(3)(B)	0.10 ug/L	71-55-6
1,1,2-TRICHLOROETHANE	0.01 mg/L	\$290.103(3)(B)	0.10 ug/L	79-00-5
1,1-DICHLOROETHYLENE	0.01 mg/L	\$290.103(3)(B)	0.10 ug/L	75-35-4
1,2,4-TRICHLOROBENZENE	0.07 mg/L	\$290.103(3)(B)	0.10 ug/L	120-82-1
1,2-DICHLOROETHANE	0.01 mg/L	\$290.103(3)(B)	0.10 ug/L	107-06-2
1,2-DICHLOROPROPANE	0.01 mg/L	\$290.103(3)(B)	0.10 ug/L	78-87-5
BENZENE	0.01 mg/L	\$290.103(3)(B)	0.10 ug/L	71-43-2
P-XYLENE		\$290.103(3)(B)	0.10 ug/L	106-42-3
STYRENE	0.10 mg/L	\$290.103(3)(B)	0.10 ug/L	100-42-5
TETRACHLOROETHYLENE	0.01 mg/L	\$290.103(3)(B)	0.10 ug/L	127-18-4
TOLUENE	1.00 mg/L	\$290.103(3)(B)	0.10 ug/L	108-88-3
TRANS-1,2-DICHLOROETHYLENE	0.10 mg/L	\$290.103(3)(B)	0.10 ug/L	156-60-5
TRICHLOROETHYLENE	0.01 mg/L	\$290.103(3)(B)	0.10 ug/L	79-01-6
VINYL CHLORIDE	0.00 mg/L	\$290.103(3)(B)	0.10 ug/L	75-01-4
XYLENES (TOTAL)	10.00 mg/L	\$290.103(3)(B)	0.10 ug/L	none
DICHLOROMETHANE	0.01 mg/L	\$290.103(3)(B)	0.10 ug/L	75-09-2
ETHYLBENZENE	0.70 mg/L	\$290.103(3)(B)	0.10 ug/L	100-41-4
MONOCHLOROBENZENE (CHLOROBENZENE )		\$290.103(3)(B)	0.10 ug/L	108-90-7
M-XYLENE	10.00 mg/L		0.10 mg/L	108-38-3
ORTHO-1,2-DICHLOROBENZENE	0.60 mg/L	\$290.103(3)(B)	0.10 ug/L	95-50-1
O-XYLENE		\$290.103(3)(B)	0.10 mg/L	95-47-6
PARA-1,4-DICHLOROBENZENE	0.08 mg/L	\$290.103(3)(B)	0.10 ug/L	106-46-7

## Other

Contaminant Name	Drinking Water Standard	PWS Rule	TCEQ Threshold	CAS Number
CRYPTOSPORIDIUM PARVUM				
AROCLOR (PCB)			0.05 ug/L	53469-21-9
TOTAL ALPHA EMITTING RADIUM	5.00 mg/L	\$290.110		
TOTAL COLIFORM				
TOTAL TRIHALOMETHANE	0.10 mg/L	\$290.116	0.10 ug/L	
TRIAZINES				
ESCHERICHIA COLI				
FECAL VIRUSES				
GIARDIA LAMBLIA				
P-ALKALINITY				


### Map Legend

#### Water System Sources

Source Type

Source Type


 Surface Water

 Ground Water


#### Capture Zones

Travel Time

 2 Years

 5 Years

 10 Years

 20 Years

 50 Years

 100 Years

 Other


#### Truncated Watersheds




#### Potential Sources of Contamination

Type Description

 ANIMAL FEEDING OPERATION

 BUSINESS

 CEMETERY

 CHEMICAL PIPELINE


 CHEMICAL STORAGE

 CLASS I INJECTION WELL


 CLASS II INJECTION WELL

 CLASS III INJECTION WELL

 CLASS IV INJECTION WELL

 CLASS V INJECTION WELL

 GUN RANGE

 NATURAL RESOURCE PRODUCTION

#### API



 TRANSPORTATION

 WASTE

 WASTEWATER

---